

# PRO-VISIONS

PRO COOPERATIVE MEMBER NEWSLETTER

QUARTER 1

OCTOBER 2021



**PRO**  
COOPERATIVE





# A NOTE FROM PRO'S CEO: TERRY PANBECKER

Happy harvest! We are excited to wrap up the 2021 harvest; the yields were overall better than expected and the producers were excited to get into the fields! Thank you all for continuing to support Pro Cooperative! We value your safety and our staff's safety when you bring grain into Pro's facilities; please be mindful and visible in your surroundings and watch out for moving equipment. I want to also say a big thank you to those who attended the Employee and Customer Grilling events that occurred at our 14 grain elevator locations. It was a great success! We fed over 1400 brat and pork burger meals from the Newell Meat Locker to both Pro staff and customers. We look forward to doing it again next year!



Pro has exciting projects starting this fall! We are excited to announce the expansion of the Terril location with an addition of a 24/7 fuel pumping station. This project began late summer with dirt work and construction late fall. The expectation of completion is by late winter/early spring 2022. The addition will have an easy in and out access from the N14 highway and the pumps will have premium fuel and diesel options to capitalize on the farming community, the general public, as well as the lake traffic. These pumps will be a great asset to continue serving both Pro members and nonmembers of the Terril community! Thanks to our great Board of Directors, Pro is able to continue to improve our locations - just like this project in Terril as well as the addition in Agronomy Center in Rolfe (update on page 16)!

Are you interested in serving your local cooperative? Pro is starting to look for motivated and dedicated board members to join the Board of Directors. Please call the main office in Pocahontas to learn more!



As we conclude this calendar year, I want to mention Pro's Annual Meeting is scheduled for December 15, 2021 and will start at 1 pm. This will be a meeting that we will conduct via online only. Please call Brittney at the main office to be included in the Zoom meeting and be sent a link to the meeting. Following the meeting, we plan to post on our Facebook page and Pro's website the recording of the meeting, just as we did for the 2020 Annual Meeting. Todd Glynn with Meriwether, Wilson & Company will be speaking on the financials of Pro's 2021 year. Thank you all again for being a supporter of Pro Cooperative! Take care! - Terry



# MEET PRO'S BOARD OF DIRECTORS EXECUTIVE TEAM:

## Jim Shimon, 2021 Board President - Rolfe Area



### **Q: What do you enjoy most about being on the Board of Directors?**

A: The thing that I enjoy the most is being able to make a difference in the coop. I enjoy learning from my fellow Directors and meeting the patrons in Pro's trade area

### **Q: What is the process to join Pro's Board of Directors?**

A: The process starts with interested patrons informing a current Director that they want to run for a Board of Directors position. Then their name is put on an election ballot and the ballots are sent to Pro's members. If approved by members, the candidate is elected for a three-year term.

### **Q: Through the years, what was the most rewarding moment from being a Pro Board member?**

A: The piece that I enjoy seeing the most is the company updates – both facility upgrades as well as new projects. Pro Cooperative's goal is to be as safe and efficient as possible for the patrons. As a board, we listen and implement updates consistently across the trade area and that is one of my favorite parts.

## Robert Brinkman, 2021 Vice President - Rolfe Area



### **Q: What is one achievement Pro has made since you have been on the board you are proud of?**

A: I am proud of how far our grain facilities have come and all the improvements we have made to our locations. We are updating locations constantly to increase efficiencies, overall speed, and safety to the location's staff and patrons while they visit the facilities.

### **Q: As we look to the future of Pro Cooperative, what are the Board's goals?**

A: We are going to continue working on improvements at all facilities. The coop is working on speed, efficiencies, and improving overall customer services to better serve the patrons and customers of Pro.

### **Q: Through the years, what was the most rewarding moment from being a Pro Board member?**

A: I think the most rewarding part of being apart of the Board of Directors is hearing the compliments from customer owners and patrons about our company. We listen to all comments from the producers, but positive feedback that we are making the Cooperative better is what I feel is the most rewarding piece.

## Darin Refsell, 2021 Board Secretary - Graettinger/Wallingford Area



### **Q: What would you tell someone who might be interested in joining Pro's Board?**

A: I enjoy meeting the patrons from across the trade area. In this role as a Board member, I have met so many people that I wouldn't have otherwise had the opportunity to. In the role of a Board member, we help evolve the business to meet the needs of Pro's patrons as well as the Cooperative.

### **Q: What are some of the responsibilities of being a board member?**

A: The Board of Directors is a voice of Pro's patrons across the trade area, and we listen to our peer's needs and wants. We give guidance to the staff on the goals and the planning of the company's future.

### **Q: Through the years, what was the most rewarding moment from being a Pro Board member?**

A: The piece that I am the proudest of is Pro is still Pro. Even with all the mergers going on around us, Pro's staff, the patrons, and this Board of Directors are dedicated to staying Pro Cooperative and continuing to make it stronger far into the future.



# PRO'S NEW AUTO SERVICE CENTER LEAD: ROLFE - TOMMY KING



**"I am very thankful for the opportunity to help farmers all around Pro's trade area with their tire needs. Seeing the appreciation on the farmer's face when I show up to a service call is one of my favorite moments of my job at Pro Cooperative!"**  
– Tommy King

If one has visited the Rolfe Auto Service Center or had a tire service call this fall from Pro, you may have recognized a familiar face! Tommy King has recently assumed the Location Lead's position at the Rolfe Auto Service Center. "I started in this location 4 years ago when I joined Pro. I then got transferred to the Pocahontas Auto Service Center where I got to learn from the team over there and be under Matt's leadership. I believe that opportunity helped me grow my leadership skills which I am thankful for", King shares regarding how he got his start at Pro Cooperative. "When I started in the automotive industry, I had learned the entry level information needed for an auto tech from my father and then I went to an automotive dealership where I stayed for 13 years in Humboldt where I continued gaining experience and knowledge. An auto tech position opened up at Pro and I jumped at the opportunity and haven't looked back; I enjoy working at Pro!"



King explains what he is most excited about in this position of Auto Lead is it challenges him to be a better leader and auto tech and greatly enjoys being in the Rolfe community. "When I accepted this position as Lead, I knew that this location is where I belong. The team over here works well together and the customers are responsive and understanding. The automotive and tire industry is weird right now with supply chain issues". King goes on to explain he goes on 3 to 4 service calls a day, across the trade territory fixing tires! "I work on pretty much any tire, and I drive to pretty much anywhere that needs me to be. I want to help and this company and this vehicle helps me succeed in that mission". King is a father of three and enjoys attending their sporting events with his wife, Jessica, and being together as a family. Pro thanks Tommy and congratulates him on his promotion!



# PRO'S NEW LOCATION LEADER: MANSON - DENNIS TRENARY



"Pro Cooperative has provided me an opportunity for me to continue growing my leadership skills," shares Dennis Trenary, Pro's new location leader in Manson. "When I began my journey at Pro in 1995, I started as an Operations Associate in Gilmore City where I would dump grain and help with daily maintenance of the grain department of the location. This is when I learned the business and the basics of the agricultural retail and the cooperative business. Then I moved to Rolfe's location and moved up to an Operations III Associate where I would assume the location manager's duties in their absence."

Trenary goes on to share that in his role at the Rolfe location helped him deepen his passion to continue advancing in his career at Pro Cooperative; he wanted to grow his leadership skills to become a location manager! "At Pro Cooperative, the customer and members are to be treated with respect. I want to continue to grow the business here in Manson and keep all customers satisfied with the service they received from Pro Cooperative's staff. I want everyone to know and feel they are welcome and appreciated for continuing to go with Pro." Trenary knows the importance of a location providing good service and a friendly atmosphere as he is a Pro Cooperative producer and member-owner himself!



Since Trenary became the location Manager in Manson in August, Pro updated their fuel pumps. "These pumps were updated in the early part of the summer as the system was outdated and weren't able to be serviced anymore," explains Trenary. Pro has received great feedback from this upgrade and addition to this location. Trenary continues to explain that the customers are excited to have updated pumps that are more user friendly in Manson. When Trenary is off the clock, he enjoys spending time with his family. "I recently just had a grandson born. I spend a great majority of my free time with my family and making memories with them". Pro Cooperative congratulates Dennis on his new position at Pro!





# PRO'S NEW AUTO SERVICE CENTER MGR: - MATT PEDERSEN -



"Efficiency is the name of the game here at Pro Cooperative and that includes the Auto Service Centers," starts Matt Pedersen, Pro's new Auto Service Department Manager. He continues, "In the past 5 years, our shops have drastically improved how business is conducted with improved technology, tools, and the overall productivity of the staff". Starting mid-summer of 2021, Matt Pedersen began the new position of Auto Service Department Manager. His role oversees all Pro's Auto Service Centers staff, product purchasing and product inventory, among other tasks. Pedersen, a Laurens native, started at Iowa State to be a mechanical engineer but quickly found out that route wasn't for him. "When I graduated from High School, it was expected to attend a 4-year university and get a degree. I tried the university path, and it just wasn't for me. I then transferred to a tech school and graduated with an Auto Technician degree. Sometimes we forget that trade schools and trade career opportunities are just as important as engineers, doctors, etc. when we graduate from high school or college".



Pedersen started at Pro as an Auto Service Technician 7 years at the Pocahontas Auto Service Center after being at a car body shop. Pedersen explains, "I have always enjoyed working with my hands; cars are my passion. My love for automotive work started young with my dad where him and I would work on cars at our family's farm - I overhauled my first engine at age 14 and haven't looked back since!" He explains that a challenging piece of being in the automotive repair industry is the ever-changing technology that is used to build the cars and the tools needed to work on the automobiles and diesel vehicles. Pro's Auto Service Centers not only work on cars, but they are also quite skilled in the diesel and semi world, too. "Pro's Auto Service Centers work on almost all our rollingstock which is a great benefit in today's economy for efficiency and consistency amongst our fleet. Pro's Auto Service Centers are the most successful they have ever been, and I am so excited to continue to grow this business and working on vehicles." Congrats, Matt!





# PRO'S NEW LOCATION LEADER: RUTHVEN - JARROD JOYNT



Pro is excited to welcome Jarrod Joynt to the Pro Cooperative family! At the beginning of September, a familiar face joined the Ruthven location! Jarrod Joynt assumed the location manager role at the location after hearing about this job through his brother and fellow Pro Cooperative Agronomy Sales Leader, Jeremy Joynt, "My brother spoke highly of Pro Cooperative and the great farmers that he gets to assist. The position in Ruthven became available and I was excited for the opportunity to be a part of the Pro Team." Joynt continues, "I was drawn to how active and community-oriented Pro is. The community and the farmers are the driving force behind this company. It has been great to re-connect with some familiar faces as well as meeting many new farmers. I look forward to building these relationships."

**"In my new position at Pro I want to direct, promote, and coordinate operations in a manner that those involved with the Ruthven location can be proud of. I want to ensure that all our customers have a great experience when they visit Pro Cooperative." - Jarrod Joynt**

Joynt is an Emmetsburg native who grew up on an acreage between Emmetsburg and Ayrshire where he would assist his family and neighbors with various farm related activities. "Growing up helping family and neighbors gave me a great appreciation for the hard work and dedication that goes into being a grain and livestock farmer. It is exciting to be a part of the process assisting in their operations of grain, agronomy, and feed. Pro is dedicated to being an active part in helping the farmer be successful." Joynt joins Pro after working in operations as a Purchasing & Warehouse Manager for the past 12 years. In his prior role, he was a key member in leading many facets of operations in purchasing, warehousing, and accounting. These experiences will directly benefit him in his role today as Ruthven's Location Manager. Joynt's passion outside of work is being involved in anything sports related as a fan, coach, or referee. When he's not working or involved in sports, you can find him spending time with his family, camping or boating. Welcome to Pro, Jarrod.





## PRO'S NEW ADMIN ASSISTANT: MANSON - JAMIE FRITZ



"What drew me to Pro Cooperative was how awesome the benefits are! In addition, I love the atmosphere here in the Manson location," shares Jamie Fritz. The Otho, IA native joined the Pro Cooperative team in late August as Manson's new Administrative Assistant. Fritz accrued a degree in accounting from Buena Vista University following her high school graduation. With an automotive & accounting background it was a slight adjustment from working with car dealerships to working with farmers. "I have enjoyed connecting with people and interacting with the customers in the area. Manson has a nice location and office and the staff at this location have been extremely helpful. I am excited to grow with this industry and continue to learn more about this business. Welcome to Pro Cooperative, Jamie!"

## PRO'S NEW ADMIN ASSISTANT: RUTLAND - TAMMY PANBECKER



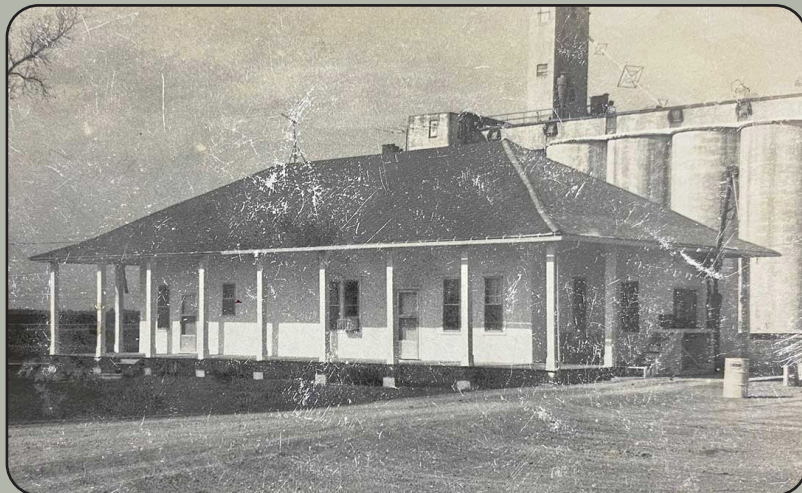
"I love coming to work every day! Between the company's culture and my team in Rutland, I truly enjoy my job," Tammy Panbecker explains with excitement. Panbecker is the new Admin Asst in Rutland following the retirement of Linda Benz. But Panbecker is not a stranger to Pro Cooperative as she was the Admin Asst. at the Rolfe Auto Service Center prior to her new role in Rutland. The Pocahontas native is a graduate of Hawkeye with a degree in Architectural Drafting and following college graduation, she worked for a drafting company where she designed and drew up plans for metal buildings. "My experience in the drafting and construction industry has really come in handy in this position as both positions are very customer service focused. Pro as a company as well as within my location in Rutland, has the daily goal to have superior customer service to our members and customers which is something that I value and appreciate just as much as the producers", shares Panbecker. In her free time, she enjoys spending time with her grandkids and camping in her camper around the area. Congrats, Tammy!"





# PRO'S PERSPECTIVE: THE STORY OF PRO COOPERATIVE

Pro Cooperative has a strong history - grounded in the support of the local producers and farmers across Pro's twenty-two locations. From the beginning, Pro has been a full-service, member-owned cooperative. Now serving twelve counties in north central and north western Iowa, Pro takes pride in investing in the success of the local communities.



Original Cement Plant Building in 1981

In 1969, these two co-operatives overwhelmingly approved a merger to form one co-op known as The Farmers Co-operative Company of Bradgate. That farmer-owned company grew and served the needs of its members and provided leadership and direction to the communities involved. About the same time, The Cement Plant in Gilmore City was acquired. The photo at the top of the page was taken on July 14th, 1924 at the Gilmore City Cement Plant.

The Farmers Co-operative Company of Bradgate had its start in 1911 as a stock company. In 1912, the Gilmore Grain and Elevator Company was organized. Several years after the 1922 Capper-Volstead Act, both companies reorganized into true co-operatives. Each operated independently for many years acquiring additional property and storage from private companies and individuals. In 1958 Farmers Co-operative Company of Bradgate purchased The Charlton Grain Elevator in Rolfe and just a few years later, in 1961, a second private grain company was purchased.



Elevator staff dumping grain in 1950

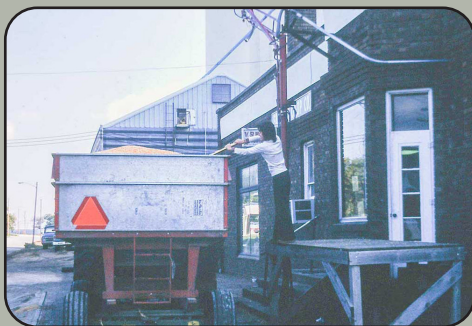




In 1991 the Rutland Elevator Company was added to the mix and the company name was changed from Farmers Cooperative Company of Bradgate to Pro Cooperative with the introduction of a new company logo. In 1996, Pocahontas, Havelock, and Plover merged with Pro Cooperative and two years later, in 1998, Farmers Cooperative in Manson merged with Pro Cooperative as well.



Original Bradgate's office in 1981 before the tornado



Manson's Admin Asst.'s during 1978's harvest



Terril location in 1963 after the small bins were demolished

On January 1, 2009, Pro Cooperative joined forces with Farmers Cooperative Elevator Company as a combined cooperative, which added five locations; Ruthven, Graettinger, Terril, Wallingford and Milford's Soy Solutions. Mid-year 2009, Pro's corporate headquarters was moved to Pocahontas, IA, to the center of the trade territory. In 2016, Pro Cooperative updated its logo to renew its commitment to serving its communities, members and employees. Most recently, in March 2017, Pro Cooperative acquired Houseman Oil Company in Estherville.

The purpose of merging companies together is to build one strong organization as well as strive to uphold Pro Cooperative's core values; Trust, Service, Fun & Safety.



Ruthven location prior to the merger with Pro

**Today, Pro Cooperative continues to grow and is now serving twelve counties in northwest and north central Iowa. We are investing in our communities, our people, and our facilities. All of the success of Pro Cooperative is possible because of you – the patron. We thank you for your business, and we look forward to growing with you in the future.**



# AGRONOMY UPDATES

**Take the opportunity to lock your seed in at the BEST price. Take advantage of all the discounts!**

Secure by WinField United provides attractive terms for lines of credit (LOC) for qualified operations that purchase WinField United seed treatments. CROPLAN and partner – branded seed products sourced by WinField United. Exclusive 0% and 2% fixed APR rates are offered for qualified operations. Details of the offer: - Rapid Application Process: single page easy application to help you save time. - Keeping You in Mind: low fixed rate APR financing terms combined with an extended maturity, out to Feb 2023, allowing you to make payments on principal after harvest. - Seed and Seed Treatment: can be used to purchase qualifying purchases of WinField United branded and partner branded seeds.

**The brands of seeds available for seed financing with Pro Cooperative:**

Dekalb/Asgrow  
Northrup King (NK)  
Croplan  
Brevant  
Stine



**Contact your local Pro Cooperative Agronomist to learn more!**





# ENERGY UPDATES

## 6 Safety Tips for Propane Fueled Homes

1. Do not under any circumstances, try to modify or repair valves, regulators, connectors, controls or other parts on appliances, cylinders, or tanks
2. Know the smell of propane. It smells like rotten eggs or the odor of skunk spray
3. If you paint your tank, use only white or a bright color, this will deflect heat
4. If you have added a propane appliance recently, let your propane provider know so they can perform the proper safety checks.
5. Make sure all your appliances are properly vented
6. Know where your gas lines are

**For more info and safety tips, visit [Propanelowa.com](http://Propanelowa.com).**



---

## 5 Steps to Lower Your Home Energy Bill

1. **Use a programmable thermostat** - Homeowners can save about 10% per year on heating and cooling costs and consumer less energy.
2. **Let the sun shine in** - Open the blinds and use skylights for extra heat and light
3. **Switch to energy star appliances and light bulbs.** On average, Energy Star appliances use 10% to 20% less energy than standard appliances.
4. **Reduce your water heating expenses.** Look to switch to a more cost-effective water heater to cut costs.
5. **Consider the energy source for your major appliances.** Propane appliances offer reliable comfort, better savings, and sustainable living. Propane also outperforms other energy sources and can power a wide array of appliances in a home

**For more info and safety tips, visit Dept of Energy's website.**



# FEED UPDATES

## Pro Cooperative's Tub and Mineral Sale!



For questions or to ensure the product you would like is at your preferred Pro Cooperative location, please contact:

Haley Davis 712-358-2494 or  
Chris Bormann 507-220-3610

**Sale dates: Oct 11, 2021 – Dec 31, 2021**  
**-No Minimums!-**

### Qualifying tubs include:

- Wind & Rain All Season 4 Availa 4 Mineral Tub (225 lbs)
- Rangeland 30-13 Protein Tub (225 lbs)



### Tub Prices:

- \$30/ton (8 tubs) or \$3.75/tub
- 5% Full Pallet Discount (8 tubs)

### Qualifying bagged minerals include:

- Wind & Rain Storm Front All Season 7.5 Complete
- Wind & Rain Storm Front All Season 7 Complete Availa 4
- Wind & Rain Storm All Season 7.5 Complete Altosid

### Bagged Minerals Prices:

- \$40/ton or \$1/bag
- 5% Full Pallet Discount





# GRAIN UPDATES

## SAVE THE DATE!

- PRO COOPERATIVE'S ANNUAL MEETING -

**December 15, 2021 - 1 PM  
Online Zoom Meeting Only!**

Pro's 2021 Annual Meeting will be held virtually only via Zoom meeting. Todd Glynn with Meriwether, Wilson & Company will be speaking on the financials of Pro's 2021 year. Please contact Brittany at Pro's Headquarter's office to be sent the Zoom meeting link, 712-335-3060.

---

## SAVE THE DATE!

PRO COOPERATIVE'S MARKET OUTLOOK MEETING - WINTER 2021

**January 18, 2021 - The Shores at  
Five Island, Emmetsburg, IA - 9 AM**

Join us for keynote speakers and a morning filled with marketing information featuring Matt Campbell, Risk Management Consultant at StoneX Financial Inc. More information is to follow. Please send RSVP to Kris Hauswirth at 712-335-3060 or [khauswirth@procooperative.com](mailto:khauswirth@procooperative.com).





## PROGRESS AT PRO: AGRONOMY'S CROP PROTECTION & SEED CENTER

Progress is moving along nicely at Pro's Agronomy Crop Protection and Seed Center located in Rolfe! As shared by Dana Gee, Agronomy Dept Manager, "This project is getting very close to the finish line! We are so excited to welcome producers into this facility and to provide this great asset to the communities surrounding Rolfe this coming spring". A couple of key components this facility will offer to producers includes a 24/7 loadout lane for all chemical needs, an opportunity to hot load UAN/ H<sub>2</sub>O/ and other chemistry needs, and state-of-the-art Kahler Automation liquid loadout opportunities. This facility will also house a great amount of Pro's bulk seed and the seed protection components. Gee continues, "SOILMAPS, Pro's grower work order creation platform, will be added to the Kahler automation to ensure an accurate and timely loadout of products for both chemical and bulk seeds". If you have further questions on Pro's Crop Protection and Seed Center, the products available or the services the Agronomy Department can offer, be sure to call your local agronomist!





To Provide Premier Services To Every Customer Through Advanced Technical Knowledge

#### CASH BIDS

Cash Bids

Name	Delivery Start	Delivery End	Cash Price	Basis	Basis Month	Futures Price	Fut. Chg.
HAVELOCKIA							

# PROGRESS AT PRO: PRO'S NEW WEBSITE!

At the beginning of September of 2021, Pro changed website providers! This transition was prompted after the previous website was functionally unmanageable. In addition, the price to host the website was no longer feasible.

Pro's team reached out to a local website designer and as of Sept. 13th, Pro's website looked recharged, refreshed, and is now more user friendly on all devices.

Grain Location	Thursday 10/14/21	Friday 10/15/21	Saturday 10/16/21
Ayrshire, IA	7:30 am - 4 pm	7:30 am - 4 pm	7:30 am - 4 pm
Bradgate, IA	7:30 am - 4 pm	7:30 am - 4 pm	7:30 am - 4 pm
Gilmore City, IA	7:30 am - 4 pm	7:30 am - 4 pm	7:30 am - 4 pm
Graettinger, IA	7:30 am - 4 pm	7:30 am - 4 pm	7:30 am - 4 pm
Havelock, IA	7:30 am - 4 pm	7:30 am - 4 pm	7:30 am - 4 pm
Manson, IA	7:30 am - 4 pm	7:30 am - 4 pm	7:30 am - 4 pm
Pioneer, IA	7:30 am - TBD	7:30 am - TBD	
Pocahontas, IA	7:30 am - 4 pm	7:30 am - 4 pm	
Plover, IA	7:30 am - 4 pm	7:30 am - 4 pm	
Rolfe, IA	7:30 am - 4 pm	7:30 am - 4 pm	
Ruthven, IA	7:30 am - 4 pm	7:30 am - 4 pm	
Rutland, IA	7:30 am - 4 pm	7:30 am - 4 pm	
Terril, IA	7:30 am - 4 pm	7:30 am - 4 pm	
Wallingford, IA	7:30 am - 4 pm	7:30 am - 4 pm	

**Weather**

Pocahontas, Iowa (50574)

Conditions: Clear

Temperature: 41°F

Feels like: 36°F

Humidity: 82%

Pressure: 29.89 in. Hg

Wind: 6 mph

From: Southwest

**Three Day Forecast**

Thurs. **Hi: 59°**  
**Lo: 39°**

Fri. **Hi: 58°**  
**Lo: 40°**

Sat. **Hi: 63°**  
**Lo: 39°**

Name	Delivery Start	Delivery End	Cash Price	Basis	Basis Month	Futures Price
PIONEER IA						
CORN	10/01/2021	10/31/2021	\$5.20	-18	Dec 2021	\$38-0
CORN	01/01/2022	01/31/2022	\$5.22	-25	Mar 2022	\$46-6
CORN	03/01/2022	03/31/2022	\$5.22	-25	May 2022	\$46-6
CORN	05/01/2022	05/31/2022	\$5.25	-25	Jul 2022	\$50-2
CORN	07/01/2022	07/31/2022	\$4.88	-45	Dec 2022	\$33-2
CORN	10/01/2021	10/31/2021	\$11.87	-50	Nov 2021	\$237-2
SOYBEANS	01/01/2022	01/31/2022	\$11.92	-55	Jan 2022	\$247-6
SOYBEANS	03/01/2022	03/31/2022	\$12.01	-55	Mar 2022	\$259-0
SOYBEANS	05/01/2022	05/31/2022	\$12.05	-60	May 2022	\$265-0
SOYBEANS	07/01/2022	07/31/2022	\$12.09	-60	Jul 2022	\$269-2
SOYBEANS	10/01/2022	10/31/2022	\$11.99	-75	Nov 2022	\$234-0

**LOCATIONS**

**Ayrshire, IA**  
3717 420th St.  
Ayrshire, IA 50515  
515-684-0410  
Location Leader: Lawson Jackson  
Email: Ayrshire

**Bradgate, IA**  
500 South Public St. Box 228  
Bradgate, Iowa 50520

Some neat features on Pro's new website includes up-to-date weather and radar as well as daily markets and market commentary provided from Barcharts. Pro's locations are easy to navigate and locate. Another big improvement is Pro's Harvest Hours addition. This add-on is located under the grain tab. There are many more features that have improved the functionality of the website and the Pro team is excited for this transition. Be sure to check out Pro's new website at [www.procooperative.com](http://www.procooperative.com).



# PRO HELPS THE LOCAL COMMUNITIES



Pro donated two door prizes to the Graettinger Fire Dept in late June for their annual golf tournament. Accepting the donation on behalf of the fire dept was Phillip Schmitt.



In early July, Pro Cooperative helped support the local youth's Iowa Rodeo and Rough Stock. They participated in the Rolfe Rodeo during their city's celebration. Pictured here accepting the donation from Pro's Grace Vathauer (L) and Brit Hammen (R) was Lily Genter (C)



Pro Cooperative partnered with Land O' Lakes to generate this donation to the City of Laurens. This donation is to help fund the new swimming pool and aquatic facilities that is being built in the city. Accepting the donation from Pro's Gracie Vathauer are members of the Laurens Pool Project (L-R): Ann Beneke, Lyle Wallin, Glenda Mulder, and Jean Swanson.



Thank you to the GTRA FFA Chapter for feeding the farmers and staff at some of Pro's locations!

Thank you to the Manson Northwest Webster FFA Chapter for feeding the farmers and staff at Pro's Manson location!





# PRO'S GRILLING OUT!

## Thank you, Pro employees and customers!



During the Bradgate grillout, customers enjoyed their meal on the front step of the scale office after a soggy morning during harvesting! Pro served over 70 meals in Bradgate that day alone!



Ofelia Rumbo and farmers had a conversation at the Ayrshire Feed Mill. Most of the corn that Ayrshire receives goes into making pig feed for the local pig barns.



Pro's grain drivers, Leo Shimon and Christine Hoeppner, grabbed a meal while waiting to dump grain in Manson. We appreciate our employees and farmers and we will be coming to a location near you again for the 2022 harvest!



Pro's Kris Hauswirth delivered a meal to a farmer coming across the scale in Havelock during the Havelock grill out. Thank you to all that made our grill outs successful this harvest season!



Pro's Brittney Gamble and Terry Panbecker served two meals to farmers in Plover before they went to field. Thanks for coming and visiting us at Pro elevator locations!



Pro's Haley Davis and Jarrod Joynt helped feed the farmers in Ruthven. Overall, Pro fed over 1400 meals to the customers and employees of Pro Cooperative during the 2021's Harvest Location Grill outs!





PO BOX 189  
17 3rd AVE NE  
POCAHONTAS, IA 50574



**LOCATIONS**

Ayrshire .....	515-884-8410	Manson .....	515-890-5409	Rolfe .....	515-890-5430
Bradgate .....	515-375-6523	Milford .....	712-338-2223	Rolfe Heartland ..	515-890-5473
Estherville .....	712-362-3857	Pioneer .....	515-373-6513	Rolfe Auto .....	515-890-5463
Gilmore City .....	515-373-6174	Pocahontas .....	712-335-3575	Ruthven .....	515-884-8430
Graettinger .....	515-884-8298	Pocahontas HQ ..	712-335-3060	Rutland .....	515-332-1491
Havelock .....	515-890-5402	Pocahontas Auto ..	712-335-3611	Terril .....	515-884-8452
Laurens .....	515-890-5460	Plover .....	515-890-5420	Wallingford .....	515-884-8462